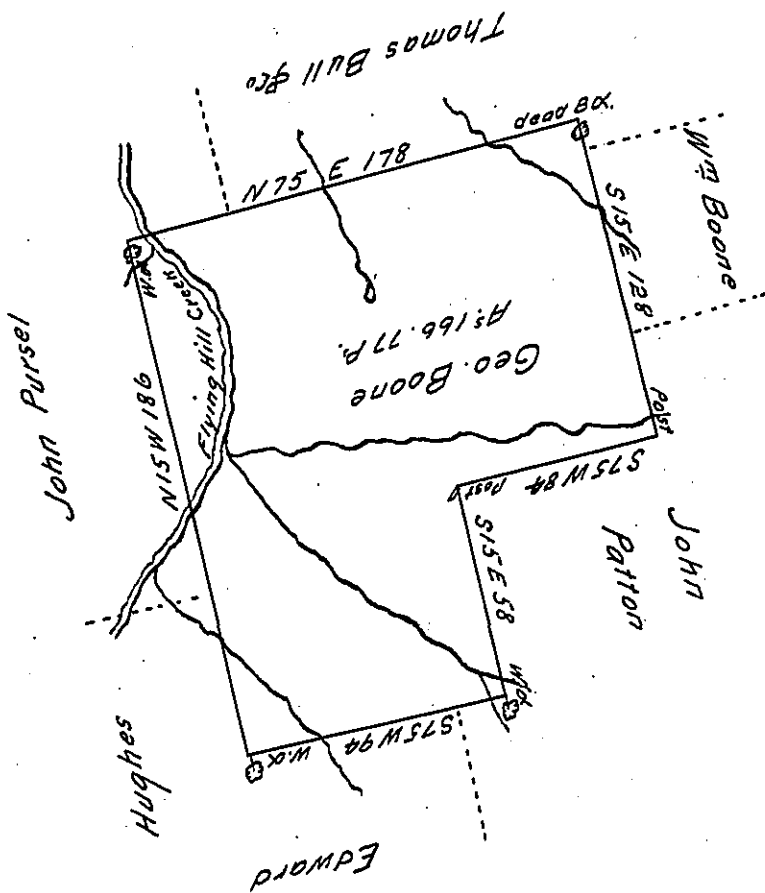


See - A-50-295



Situate in Cumru township, (at or near the Robeson township line) Berks County, Containing One hundred sixty six acres, seventy seven perches and allowance of 6 P.Ct. Surveyed on a Warrant dated the 9th June AD 1737 granted to George Boone.

Copied from James Scull's Works

Gabriel Hiester Esq^r
 Surveyor General

December 2^d 1828

Matthias S. Richards D.S.

IN TESTIMONY that the above is a copy of the original remaining on file in the Department of Internal Affairs of Pennsylvania, made conformably to an Act of Assembly approved the 16th day of February, 1833, I have hereunto set my Hand and caused the Seal of said Department to be affixed at Harrisburg, this Thirty-first day of August 1908

Henry Horack
 Secretary of Internal Affairs.